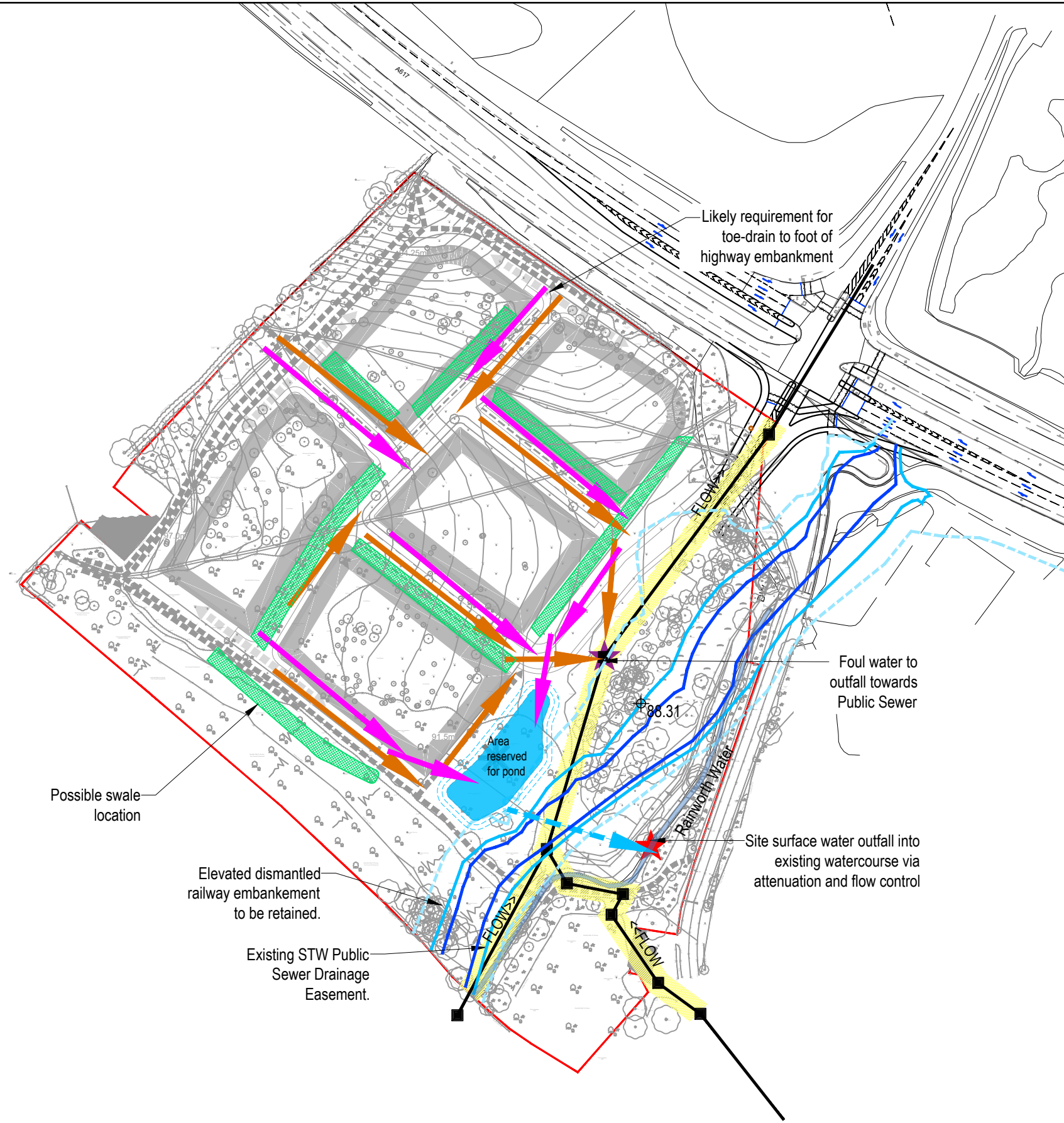


© THIS DRAWING AND THE DETAILS DEPICTED ARE THE COPYRIGHT OF BSP CONSULTING AND MAY NOT BE REPRODUCED EXCEPT BY WRITTEN PERMISSION. OS LICENCE NO. 100041272



NOTES

1. DO NOT SCALE.
2. Should there be any conflict between the details indicated on this drawing and those indicated on other drawings the Engineer should be informed PRIOR to construction on site.
3. Until technical approval has been obtained from the relevant Authority, it should be understood that all drawings issued are Preliminary and NOT for construction. Should the contractor commence site work prior to such approval being given, it is entirely at his own risk.
4. All dimensions are in millimetres unless otherwise stated.
5. The BSP Hazard Identification and Risk Assessment information for this project must be reviewed and understood by the contractor PRIOR to the commencement of any works on site.
6. This drawing contains the following model files:
FCPR Development Framework Drawing 9474-I-01 Rev A
Mapmatic Survey Drawing 3614

Key

- Approx. Site Boundary Line
- Approximate extents of flood plain High risk (3.3%)
- Approximate extents of flood plain Medium risk (1%)
- Approximate extents of flood plain Low risk (<1% >0.1%)
- Proposed SUDS attenuation pond
- Approx. surface water gravity sewer inlet to pond route
- Approx. surface water gravity sewer outfall route
- Approx. foul water gravity sewer inlet route
- Existing adopted public foul/combined water sewer
- Proposed sewer easement (required width - 5m)
- Proposed Swale

KEY PLAN

Construction Risks	Maintenance/cleaning Risks	Demolition/adaptation Risks
In addition to the hazard/risks normally associated with the type of works detailed on this drawing take note of the above. It is assumed that all works on this drawing will be carried out by a competent contractor working, where appropriate, to an appropriate method statement.		

SAFETY HEALTH AND ENVIRONMENTAL INFORMATION BOX					

P01	Initial Issue	BJS	17/12/20	SM	17/12/20	MV	17/12/20
-----	---------------	-----	----------	----	----------	----	----------

REV	COMMENT	DRAWN BY	DATE	CHECKED BY	DATE	APPROVED BY	DATE
-----	---------	----------	------	------------	------	-------------	------

SCALE @ A3	ISSUING OFFICE	PROJECT NUMBER
1:2000	DERBY	18-0494

CLIENT APPROVAL	
A - APPROVED	
B - APPROVED WITH COMMENTS	
C - DO NOT USE	

STATUS	PURPOSE OF ISSUE
S1	PRELIMINARY

• CIVIL • STRUCTURAL • TRANSPORTATION • GEOTECHNICAL • ENVIRONMENTAL

bsp
CONSULTING

5 Pride Point Drive, Pride Park,
Derby, DE24 8BX
Tel: (01332) 374880 - Fax: (01332) 374889
e-mail: info@bsp-consulting.co.uk
Also offices in Nottingham, Leicester and Sheffield

bsi
BIM Design and Construction
KITEMARK™

BS EN 15926-1
BS EN 15926-2

PROJECT	Land South of A617 Rainworth
---------	---------------------------------

TITLE	Drainage Parameters
-------	---------------------

CLIENT	ROMO Holdings LTD
--------	-------------------

PROJECT ORIGINATOR	ZONE	LEVEL	TYPE	ROLE	NUMBER	REV
RAIN-BSP-ZZ-ZZ-DR-C-0001						P01